

June 2021 Volume 49 Issue 6

The Official Newsletter of the Beehive Rock and Gem Club

PO Box 1011 Ogden, UT 84402

BEEHIVE BUZZER

In this issue

Utah produces a red gem that is more rare and more costly than diamond, inexpensive gemstones named "Tiffany" and "Picasso", gems made from dinosaur bone, and a unique gem material called "wonderstone"... and that is just a sampling. Page 6

The Most Interesting
Gems in the United
States are found in
UTAH



Red Beryl



WELCOME TO UTAH SUMMER

Specimen and photo by Arkenstone / www.iRocks.com.

Table of Contents:

Note from the President Page3

Have a question for Debbie? Page 3

Field Trip Calendar Page 3

May Field Trip Photos Page 4

June Field Trip details Page 5

June Club Meeting Page 6

Enter to Win Page 7

Unique rocks and gems of Utah Page 7-8

A Boy with a Mission by Steve Smith Page 9-10

Contact Us Page 11

Message from the President - Debbie Larsen



Hi Fellow Rockhounds!

I think summer is here to stay!!

The heat makes it a little harder to go out in the desert and hunt rocks but I think we are all determined to not let that bother us!

We had a wonderful meeting last month out at Lester park in Ogden. It was so good getting to see all of you in person again! Our program was wonderful! Thank you Babette! She had some very unique ideas of how to use your rocks for decorating. Very creative!

Looking forward to meeting again this month to see and learn about some very interesting types of petrified wood.

See you soon! Debbie

Got a question for Debbie?

She will be happy to answer.

What is her favorite ice cream?

What book would she read over and over again?

Did she ever sluff school?

And don't forget what is her favorite ROCK?

Send your question to

BeehiveBuzzer2021@gmail.com

2021 BEEHIVE FIELD TRIPS

More specific details for June on Page 5

June Details on page 5

Date: 26th – Longer weekend

optional. Trailers welcome

Place: Tony's Rock pile, Idaho

About everything you can think of!

Leader: Jay Offret

July

Date: 17th

Place: Randolph, Gastropods, Clam shells, and the famous Snail Mummies!

Leader:

August

Date: 21st

Place: Spiral Jetty, Selenite, Box Elder county..

Leader: Robyn Bunz

September

Date: 18th

Place: Wendover – Amethyst crystals, Smoky Quartz Crystals, Plume Agate,

Leader: Dawn Culley

October:

Date: TBD Wednesday – Saturday, Depending on the Moab Rock show weekend.

Place: Floy Wash area – about 17 DIFFERENT kinds of rock! This will go for several days.

Leader: Dave Offret

:

Background Utah Wonderstone

MAY FIELD TRIP HIGHLIGHTS



Greetings Beehive Club Members!! June Trip

When: Saturday, June 26th.

Where: The World Famous - Tony's Rock Pile at 10:00 AM!

Address: 1727 So, 2150 E, Gooding, Idaho. About 3 hours from Ogden, Utah.

As you get close to the property, look for signs that say "Tony's Rockpile" OR "Rock Club Group" for the last couple of turns.

Pot Luck at 12:00! Tony will provide the meat, everyone else bring a side dish and your own plates, utensils and drinks.

No Restroom facilities on - site - Convenience store is about 5 minutes away..

What to find: This will be a unique trip. Tony has built his reputation on buying Estate Sales and rocks at auction. He recently acquired 34,000 POUNDS of new material. Rocks are laid out in Piles - \$1.00 piles, \$2.00 Piles, etc, with the nicer pieces being sold individually. According to the world Famous "Jay Fackrell" who is famous for making spheres, Tony has things from all over the world, even rock that Jay hasn't seen! Bring buckets, and \$\$, , and be prepared for a great time!

If you want to stay ON the property, and are totally self-contained, Tony said he has room, but you have to call him at: Tony Funk: 208-539-5368

Places to stay in Gooding:

Gooding Hotel (Stage Coach Theme)

Lincoln Inn - Recently Remodeled...

University Inn (supposedly Haunted)

IF YOU PLAN ON GOING, our Field Trip Leader for this trip is Jay Offret. Please send him a text with the amount of people in your group - we'd like a head count for the Meat that Tony will get for us. 801-540-8280.

See directions from Ogden to 1727 S 2150 E

(<https://goo.gl/maps/6AKDvfrD9VbDjjHB9>) in Google Maps

JUNE CLUB MEETING

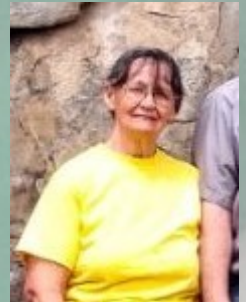
WHEN: TUESDAY JUNE 22nd 2021 6:30 Meet and greet
/ Silent Auction /Door Prize 7:00 Meeting Begins

WHERE: Golden Hours Senior Center in the park
650 25th St, Ogden, UT 84401

Bring a chair and perhaps a blanket

JUNE PROGRAM

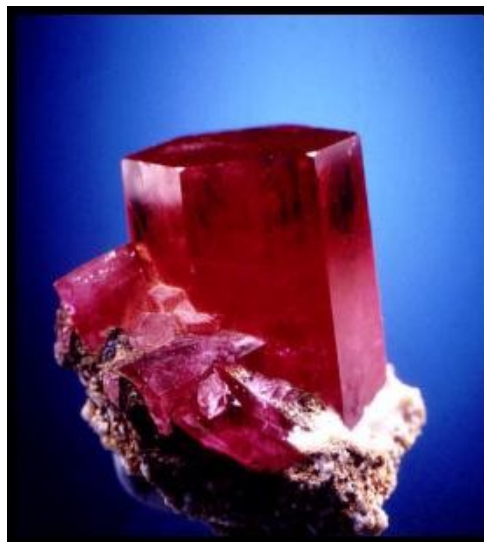
WHAT WOULD WE LIKE TO KNOW ABOUT **WOOD**?
(Petrified, That is.)



Well, two wise and wonderful women are willing to enlighten our minds with wonderful Wood wisdom and ideas. (That's it...that's all I've got.) Linda Pilcher and Debbie Larsen are going to share the Where and What about Petrified Wood. With lots of examples and information on some of the many areas to find it. I mean, it's basically world wide...wherever trees grew, isn't it? Well, we will find out. If you have some petrified wood you would like to show or maybe questions on where it might have come from, bring them to share. From your weird, and wacky but warm-hearted Program Chairman - Babette

Background Utah Variscite

Unique Gemstones of Utah



Red beryl | Photo Courtesy of <http://www.mtlilygems.com/>

WHAT GEMSTONE IS
FOUND IN UTAH THAT IS
RARER THAN DIAMOND
AND MORE VALUABLE
THAN GOLD?

Red Beryl is an extremely rare variety of beryl that receives its red color from trace amounts of manganese. In the entire world, crystals suitable for cutting gems have been found in only one location, the Ruby-Violet claims in the Wah Wah Mountains of Beaver County, Utah. The Utah Geological Survey estimated that one crystal of red beryl is found for every 150,000 gem-quality diamonds. The gemstone has several different names: red beryl, red emerald, or bixbite. Originally, the mineral was named bixbite, but now red beryl is the most accepted designation. Red beryl has been found at a few locations in Utah (Wildhorse Springs, Topaz Valley, Starvation Canyon), New Mexico (Beryllium Virgin prospect, Black Range, East Grants Ridge), and Mexico (San Luis Potosi). At these locations, crystals of red beryl are normally just a few millimeters in length and are too small or imperfect to facet.

Continued on Page 8

DK Pocket Genius

ROCKS AND MINERALS



FACTS AT YOUR FINGERTIPS

This Month's Prize Drawing
5" x 3.75" Pocket Guide
Simply reply to the Buzzer email
and tell Why you think Utah is
the best Rockhounding state.

About this pocket guide.
Profiling nearly 200 types of rocks and minerals from volcanic rocks and granite to sparkling diamonds and explosive sulfur, Pocket Genius: Rocks and Minerals digs deep beneath the surface, informing young readers what each rock is made of, how they are formed and what they are used for, how to be a rock collector, and how to identify rocks and minerals.

Rules: Entry must be in by 5pm on the 21st of JUNE. The Winner will be notified by phone or text and the prize can be picked up at the Club Meeting on the 22nd of June.

Unique Gemstones of Utah. Full article found at Geology.com



Dinosaur bone is often fossilized in a way that infills the cavities and replaces the cell walls with different colors of chalcedony. Solid material without voids or fractures can be cut into extremely colorful and interesting cabochons.



The Thomas Range of western Utah is also one of the world's best sources of topaz. Cavities in the Topaz Mountain Rhyolite often contain topaz crystals with a beautiful amber color. Topaz crystals are also found in soils and dry washes around Topaz Mountain. These crystals are usually colorless because the amber color can be lost through prolonged exposure to direct sunlight. A few specimens fade to a beautiful pink color.



Variscite is a beautiful yellow-green to deep green to blue-green material that often has interesting matrix similar to turquoise but it is generally softer and has a lower specific gravity. Variscite is an aluminum phosphate mineral that is found in a few locations in Utah. It is a secondary mineral found as nodules, fractures, and other cavity fillings, often in igneous rock. Important Utah localities are near the communities of Lucin and Fairfield....



Wonderstone is a welded-vitric tuff with a composition similar to rhyolite. It forms during explosive eruptions when molten rock material is ejected and sticks together upon landing. If it is buried by overlying ejecta while still hot, it will become compacted into a solid glassy material.



"Tiffany Stone" is a beautiful purple, blue and white rock composed mainly of fluorite, but might also contain opal, calcite, dolomite, quartz, chalcedony, and bertrandite. It is mined at just one location in the world - the Brush Wellman beryllium mine in the Spor Mountains of western Utah.

A Boy with a Mission

by Steve Smith

Favorite rock? Hmmmm..... That's a tough one. I'd have to say "Red Horn Coral". In High School, a history teacher one day had a ring on that was made out of it. He showed it to me and I thought it was one of the most amazing rocks I had ever seen! He said his uncle had made it and the stone was only found in Utah. I tried for many years to figure out where in Utah it was found but had no success. This was before the internet. Many years later I ran into an old friend from High School, who was an avid rockhound, who got me hooked on the hobby, I started again to search for the location but to no avail. All I could find was a very large, general area of where it was supposed to be. A few years later, I found a rock club from Timpanogos that was planning a field trip to the area where it could be found. I contacted the club and asked if they would mind if we tagged along. They graciously allowed us to go with them. I was so excited!! I was finally going to see where this amazing fossil came from! The trip wasn't for a few weeks and it seemed like it would never get here. The morning of the trip, we drove my 4X4 truck to the meeting place. There were a few people already there, some were out of their vehicles, talking. We parked the truck, got out and approached some of them. More people were arriving and that's when I noticed that most of them were unloading 4 wheelers. As we talked with them, one of them asked if we planned on taking my truck up to the area. I replied, "Yes, if I can". That's when my bubble was popped. The group of men that were standing around, strongly suggested that trying to take my truck up to the location was a very bad idea and they doubted we could make it.

I was crushed. Over twenty years I had tried and waited to find this, I was so close. We stayed and talked with the club as they continued to get ready to head up the mountain. As they headed out, we got back in the truck and headed home. Boy was I disappointed. As we left the area, Dave mentioned that he had talked with one of the ladies and she had said that she would send him the information on how to find the location. Once again, my expectations soared. It took weeks before he received the information on where the area of the Red Horn Coral was. It was a vague description but worth giving it a shot. Later that summer, we planned an outing for our families to go back to the area and spend the day riding Dave's two 4 wheelers, I don't remember if we told them what we were actually going for. Dave, his wife and kids and my wife and I enjoyed exploring the trails and forest. We took turns riding the 4 wheelers. We had a good time. During the day I would ask Dave if he had found the location yet but he had not. It was getting closer to evening, and we still hadn't discovered this mysterious place. Dave and I decided to give it one more chance. We convinced our wives that the two of us wanted to take one last ride. They agreed and off we went. The directions the lady from the club had given us said to go a certain number of miles and we would come to it.



We had tried a few times and hadn't found it. When we had gone the allotted miles we stopped and talked about what we could have done wrong. After some discussion, we decided to try going further before it was dark. We drove another mile and still nothing. There were trails going off in many directions. We went further, hoping to find something. As we came up a small hill, we spotted a metal shack and went to check it out. As we approached, we could see that there had been some digging in the area at some point. We got off the 4 wheelers and went down into the pit. The soil in the pit was white, different from the surrounding hills. The sun was setting as we walked around and that's when we noticed a small reddish rock about the size of a nickel. We picked it up and my heart skipped a beat. It was actually a piece of Red Horn Coral! We had found it! The sun had gone down by then and we needed to get back to our families. We loaded up and headed down the mountain. We did it! We found the place. We were so excited, we couldn't get down the mountain fast enough. As we rode back to our starting point, I realized that the rock club had been right, my truck wouldn't have made it. The trail was extremely rocky and steep in a number of places. It was completely dark when we got back and our wives weren't very happy that we had left them for so long. But they softened when we showed them what we had found. A long time search had come to an end, but a new adventure had just begun. I have visited the site a few times over the years since then. Each time it is harder to find any. It's been a few years since I've been back. Some people say there isn't any left. That may be true but there will always be some wonderful memories about finally finding my favorite rock.



If you did not get your club membership card contact Dave Offret.

Club Officers

President - Debbie Larsen 385-319-2808

Vice President - Babette Nelson 801-395-4102

Secretary - Dave Offret 801-791-6081

Treasurer - Tom Larsen 801-390-8270

Activity Committee and Chairpersons

Field Trip Leader - Dave Offret 801-791-6081

Program Chair - Babette Nelson 801-395-4102

Door Prizes - Linda Pilcher 801-668-8084

Hospitality - Linda Pilcher 801-668-8084

Communications - Steve Smith 801-781-0233

Membership - Dave Offret 801-791-6081

Safety

Publicity 801-867-5309

Buzzer Editor - Ron Yeoman Associate Editor - Debbie Larsen

Calling Coordinator - Linda Pilcher 801-668-8084

Club Photographers

Club Historian

Facebook Administrators - Ron Yeoman, Dave Offret and Debbie Larsen

Beehive Web Page Administrator - Steve Smith 801-781-0233

**For questions or comments about the Beehive Buzzer
email BeehiveBuzzer2021@gmail.com Call 801-675-1901**

Click below to get to our Facebook page or web site

Official Beehive Rock and Gem Club www.BeehiveRockandGemClub.com

NOW OPEN

OGDEN'S GEORGE S. ECCLES
DINOSAUR PARK