

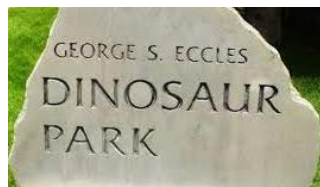
# Beehive Buzzer

September 2015 Volume 43 Issue 9



## Beehive Rock & Gem Club Program

Golden Hours Senior Center  
650 East 25th St., Ogden, UT



**September 22, 2015 — 7:00 PM**

Jeff Bond, Paleontologist from George S. Eccles Dinosaur Park in Ogden, will be speaking at our meeting this month about fossils, dinosaur bones and much much more. It should be a very interesting evening!

Tom & Debbie Larsen, Program Chairs

## **Meet the New Program Chairs Tom & Debbie Larsen**

Tom and Debbie Larsen live in Layton. Tom born and raised in California and Debbie in New York they met in a business management class when Debbie moved to California 34 years ago. They have a daughter Alani 27 and a son Garrett 23. Also a darling granddaughter Bristol 5 who just started Kindergarten. Debbie is able to volunteer in her class which gives both of them much joy.



They have been here in the area a total of 8 years moving from the Georgia area. Tom works for Centurylink as a Senior Telecommunication Engineer. Debbie does accounting for a christian ministry based out of Georgia. They are enjoying Utah more and more. They've all become more outdoor people being here in Utah. So much to do and see! Although, winters have been a challenge...Some of their favorite activities are camping, fishing, hiking, rock hounding, photography, 4 wheeling and exploring everywhere. Give them a chance to go into the mountains and they are there :)

They attend Crossroads Christian Fellowship in Uintah where Garrett is one of the worship leaders there. A very talented and gifted man of music. Tom and Debbie are involved in many ministries there also. Alani loves children and works at a daycare in Layton.

They are very excited about being part of the club and getting to know everyone.

## *Calendar*

### September

**22**

Monthly Club Meeting  
Golden Hours Center  
7 pm

### October

**1**

Board Meeting  
Golden Hours Center  
7 pm

**12**

Columbus Day

**27**

Monthly Club Meeting  
Golden Hours Center  
7 pm

**31**

Halloween

### November

**1**

Daylight Saving Ends  
Set Clocks 1-Hour Back

**5**

Board Meeting  
Golden Hours Center  
7 pm

**11**

Veterans' Day

## *New Members*

**Eric & Stephanie  
Ambrose**

Ogden

## Beehive T-Shirts Have Arrived!



The Beehive Club T-shirts have arrived and they are fantastic! We started handing them out at the August meeting. If you missed the last meeting, they will be there at the next meeting. If you will not be at the next meeting, contact David Law at 801-644-4931 or [dvlaw4931@gmail.com](mailto:dvlaw4931@gmail.com) and he will figure a way to get them to you. David Law is also the person you need to pay if you haven't paid

already (\$10/shirt). The only shirts remaining are those specifically ordered by members. All of the extras have been sold.

If you missed out on the original order or would like to order additional shirts, David Law has already started a list for our next order. Contact David Law to place an order for the official Beehive Rock & Gem Club T-shirt (all sizes available).

Thanks to Dave Offret, from the Rent-A-Hunk Modeling Service, for graciously modeling the T-shirt for us. Besides modeling for us, Dave also leads our field trips as our field trip leader. Dave was also the main person instrumental in making it possible for us to have these shirts by coming up with the design, working out all the details, and getting approval from the board. If you like the shirts, don't forget to let Dave know you appreciate his efforts and are pleased with the results. Thanks also to Joe & Bonnie Kent, David & Veldora Law, and Dennis & Nancy Anderson and all the board members for their assistance in making this happen. Thanks to Lighthouse Designs of Layton for their wonderful work.



## Yes, it is time for club membership renewal!

Annual Club Fees for the upcoming year are **due October 1, 2015**. Members who have not paid by January 1, 2016 will be dropped from the club rolls. Don't let that happen!

As mentioned in the July, 2015 Buzzer, annual membership dues have not been raised in over a decade because of our successful annual auctions. Pretty amazing when you

consider that the price of everything seems to go up every year.

Annual membership dues are **STILL ONLY**:

- \$11 Adult Single
- \$16 Couple or Family
- \$5 Junior Single (Under 18 and not part of a family membership)

It would be difficult to find a better bargain, anywhere. What can you buy these days for \$16?

...And just a few of the benefits you receive as a member of the Beehive Rock & Gem Club:

- **Rockhound Field Trips:** *Well-planned, guided trips to some of the best rockhounding sites. Most members say they are the best part of the club.*
- **Monthly Buzzer Newsletter:** *Club news, interesting articles, tips, humor, and more.*
- **Monthly Meetings:** *Interesting presentations, free education, useful tips.*
- **Access to Golden Hours Lapidary Shop:** *For a few additional bucks, you have access to a wide range of equipment with supervision.*
- **Club Socials:** *Good food, new friends.*
- **Annual Club Auction:** *Pick up good deals on rocks and equipment and at the same time keep the annual dues insanely low by supporting the club.*
- **Club Web Page:** *More club info.*
- **Club Facebook Page:** *Coming soon. Fun way to communicate with fellow members.*
- **Access to Experts:** *Decades of experience exists in the club on almost every subject relating to rocks and what you can do with them. If you have a question, most likely we can find the answer.*

*All that for only \$16 for an annual family membership?  
Are you Insane\*?*

You can pay by cash or check at the club meetings. Pay at the table where you sign in.

You can also pay by sending a check to:  
Beehive Rock & Gem Club  
P.O. Box 1011  
Ogden, UT 84402

For next year, we are looking into setting up online payments for those who would like the convenience.

This is also a great time to update your member information. Have you moved since last year? Changed your phone number or email address? If so, let us know.

\* Since we are rockhounds, yes, we have lost our marbles.





Thanks to Old West Catering for the excellent meal and for all of the delicious dishes brought by members.

Thanks to the Golden Hours Senior Center for the use of their wonderful facilities.

Photos by Dave Harris



"If you don't know where you are going, you might wind up someplace else."

Yogi Berra

"If there were no schools to take the children away from home part of the time, the insane asylums would be filled with mothers."

Edgar W. Howe



Autumn is a season for big decisions -- like whether or not it's too late to start spring cleaning.

Q: If money really did grow on trees, what would be everyone's favorite season?

A: Fall.

Q: What did one leaf say to another?

A: I'm falling for you.



Q: What did the tree say to autumn?

A: Leaf me alone.

I find autumn leaves are at their most beautiful when they're being raked by someone else.

Q: Why do birds fly south in the Fall?

A: Because it's too far to walk.



Columbus Day: A holiday solely devoted to a man's inability to ask for directions.



## Our Humor Page

Smartness runs in my family. When I went to school I was so smart my teacher was in my class for five years.



## I'm Late For School

By Gareth Lancaster, 2003

I got up late for school today,  
And nearly missed the bus!  
I hurried down the stairs,  
Wolfed my toast, and caused a fuss!

I quickly threw books in my bag,  
My pens, my lunch and shorts.  
Grabbed my coat from out the cupboard,  
Took my bat and ball for sports.

I slid across the kitchen floor,  
And hopped around the cat!  
Then expertly rolled over,  
Jumped back up and grabbed my hat!

I belted out of our front door,  
Spun round and swung it shut.  
Saw the bus was waiting for me,  
I felt I had time to strut!

I climbed aboard and then froze still,  
And knew that things weren't right!  
My friends fell down in fits of fun,  
And pointed with delight!

My face went red, I couldn't breathe,  
For in my haste I knew!  
I'd forgotten to wear trousers,  
Jumper, shirt, my socks and shoes!



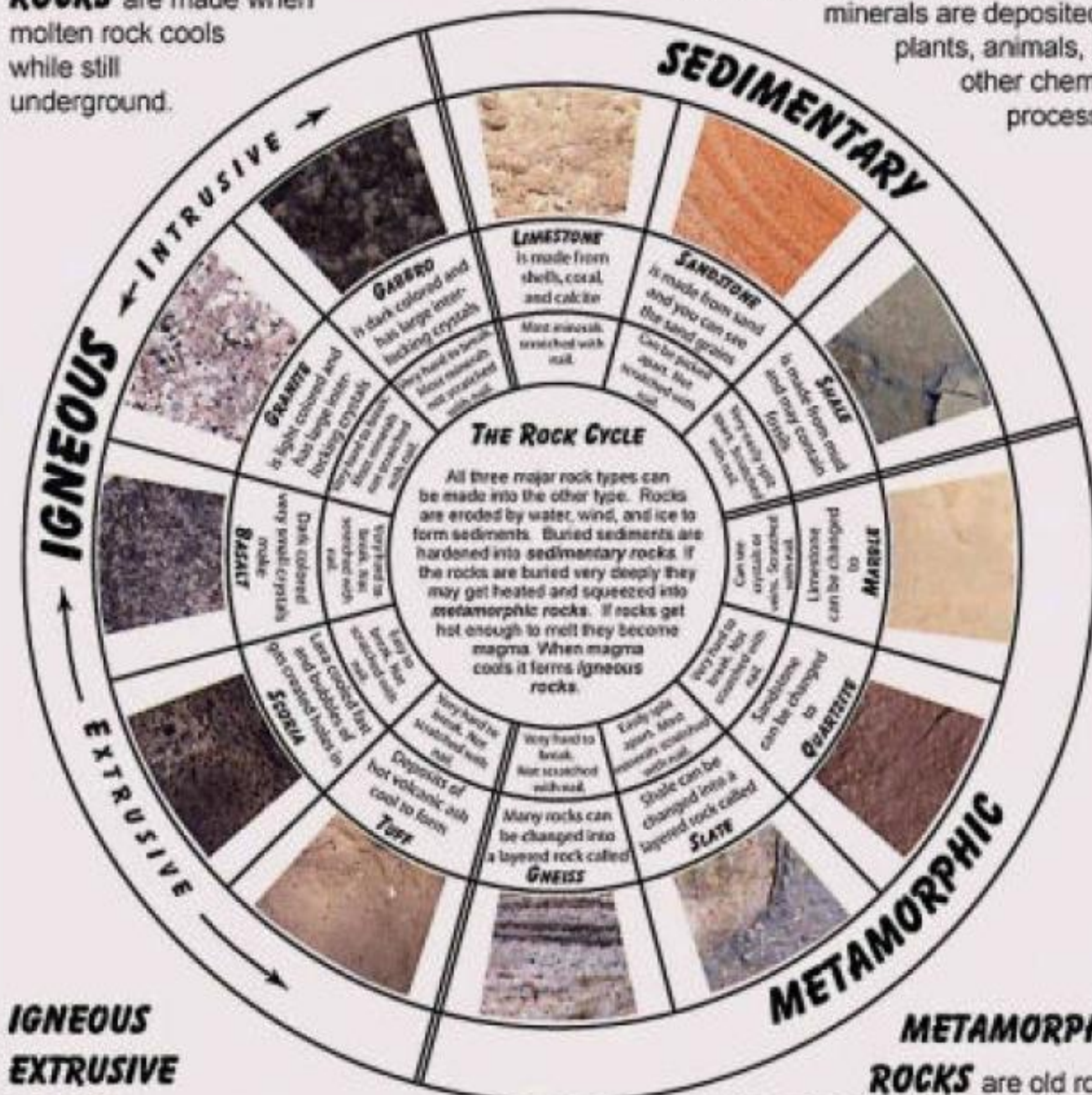


# HOW TO IDENTIFY ROCKS

## IGNEOUS INTRUSIVE

**ROCKS** are made when molten rock cools while still underground.

**SEDIMENTARY ROCKS** are made when pieces of rocks settle from the water or when minerals are deposited by plants, animals, and other chemical processes.



## IGNEOUS EXTRUSIVE

**ROCKS** are made when molten rock flows on the land surface or is thrown into the air and then is cooled into rock.

## METAMORPHIC ROCKS

are old rocks that have been squeezed and heated but not melted. What new rock is made depends on what the original rock was and on the amount of heat and pressure.

Source: Bill Langer, U.S. Geological Survey.

<http://www.bedrockquarry.com/images/identify-rocks.jpg>



## FIRE AGATE (CONTRIBUTED BY JACK KIRKLAND)



Fire agate, a variety of chalcedony with an ancient and fiery beginning, is an all natural gemstone found only in certain areas of Arizona, northern Mexico, and other parts of the southwestern United States. Approximately 24-36 million years ago these areas were subjected to massive volcanic activity during the Tertiary Period. The fire agates were formed during this period of vulcanism when hot water, saturated with silica and iron oxide, repeatedly filled cracks and bubbles in the surrounding rock, often forming a botryoidal (grape-like) growth. Fire agate gemstones have beautiful iridescent rainbow colors, similar to opal, with a measurement of hardness on the MOHS scale of between 6.5-7 which prevent the issues of cracking and scratching. The vibrant rainbow colors found within fire agates, created by the Schiller effect as found in mother-of-pearl and fire opal, is caused by the alternating silica and iron oxide layers which diffract and allow light to pass which forms the interference of colors known as fire. Besides the thin limonite and/or goethite iron oxide layers there is no actual objects inside the gems, the fire agate visual effects arise from light interference within the microstructure crystal layering of the gemstone.

Fire Agate Gems are one of the hardest gemstones to produce, taking highly skilled lapidary skills and the creative talents of a true artist. Dedication, patience and time will be needed if you plan on producing quality fire agate cabochons, but the final rewards are truly spectacular. The fire agate stone also has a large metaphysical following with the fire agate meaning

and properties of being an excellent protection stone which reflects negative energies, and healing properties for the stomach, nervous and endocrine systems.

Oatman Arizona: Cuesta Fire Agate Mine <http://www.fireagate.us/fire-agate/oatman.shtml>

Black Hills Arizona: BLM Rockhounding Site [http://www.blm.gov/az/st/en/prog/recreation/rockhnd/locations/blk\\_hills.html](http://www.blm.gov/az/st/en/prog/recreation/rockhnd/locations/blk_hills.html)

Deer Creek, Arizona <http://www.fireagate.us/fire-agate/deer-creek-fire-agate.shtml>

Opal Hill California: Opal Hill Fire Agate Mine <http://www.fireagate.us/fire-agate/opalhill.shtml>

Round Mountain Arizona: BLM Rockhounding Site [http://www.blm.gov/az/st/en/prog/recreation/rockhnd/locations/round\\_mtn.html](http://www.blm.gov/az/st/en/prog/recreation/rockhnd/locations/round_mtn.html)

Saddle Mountain, Arizona <http://www.fireagate.us/fire-agate/saddlemountain.shtml>

Slaughter Mountain, Arizona

<http://www.fireagate.us/fire-agate/slaughter-mountain-fire-agate.shtml>

Here is a site that offers links to other informational sites about fire agate. <http://www.fireagate.us/>

## Star Garnets

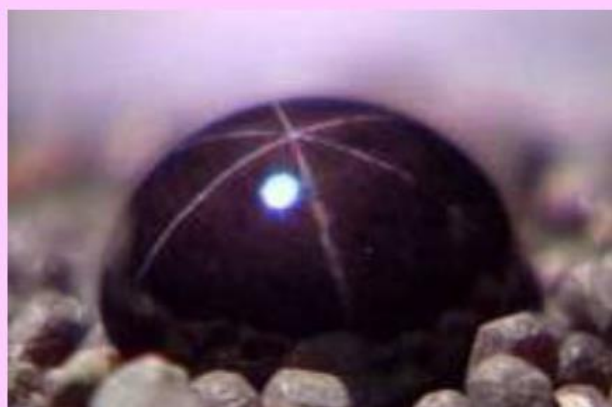
By Leon Agee (Rock Rollers)

Stars in the garnets are caused by needles of titanium dioxide the same material as in rutilated quartz. Whether the needles align to create stars depends on how slowly the garnets cooled when formed. Garnets can form in two shapes: dodecahedron that can have a four-ray star and rhombic dodecahedron that can have a six-ray star.

Tumbling the garnets could reveal the star. Since garnets and agates are both hardness 7.5, they can be tumbled together. After tumbling for one week, open the barrel and remove fragments. A good way to reveal a star is to use a toothpick to put a drop of honey on the garnet. Then shine a bright pen light on it to see the star.

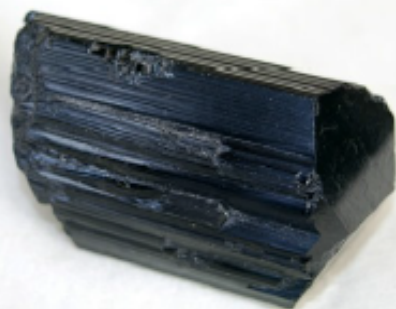
Garnets are heat sensitive. Clean the stone with denatured alcohol before attaching to the dop. Heating the garnet to apply the hot dop stick may cause it to crack. Instead, warm stone and wax carefully with an alcohol lamp. The stars show better at the center of the garnet where the needles are more compact, so if working with a fragment, polish the inside surface. Garnets typically break into oval pieces like segments of an orange that may have a four-ray star. Try to center the star on an axis of the oval when polishing. You might be able to reveal a cats-eye in some fragments.

Rock Rollers) Via Delvings



Source: MOROKS, Jul 2013



**BLACK TOURMALINE BY Lizzie Lyles**

Tourmaline has long been revered by many ancient cultures. Egyptian legend speaks of how Tourmaline made its journey from the center of the Earth and passed over a rainbow, taking with it all of the colors as its own. Ancient magicians relied upon Black Tourmaline, known as "Schorl," to protect them from earth demons as they cast their spells. Today, this stone is still revered as a premier talisman of protection, a psychic shield deflecting and dispelling negative energies, entities or destructive forces. It guards against radiation and environmental pollutants, and is highly useful in purifying and neutralizing one's own negative thoughts and internal conflicts, and turning them into positive, usable energy. Black Tourmaline is also a powerful grounding stone, electrical in nature, providing a connection between Earth and the human spirit. Its supportive energy

aligns the energy centers of the body and channels healing light throughout the system. It promotes a sense of power and self-confidence, allowing for a clearer, more objective view of the world. It is empowering to those who must live or work in challenging environments, or when facing difficult circumstances. Tourmaline belongs to a complex family of aluminum borosilicates mixed with iron, magnesium, or other various metals that, depending on the proportions of its components may form as red, pink, yellow, brown, black, green, blue or violet. Its prismatic, vertically striated crystals may be long and slender, or thick and columnar, and are uniquely triangular in cross-section. The name Tourmaline comes from an ancient Sinhalese word *tumali*, meaning "a mixed color precious stone," or *turamali*, meaning "something small from the earth." The most common species of Tourmaline is Schorl, which accounts for ninety-five percent of all Tourmaline in nature. It is black, or sometimes a blue so deep it appears to be black.

The term Schorl was in use before the 1400s, named for a town in Saxony, Germany, where Black Tourmaline was found in nearby tin mines. Needles of Black Tourmaline, or Schorl, can also be found embedded in clear Quartz, called Tourmalinated. Do radiant black are believed to create a perfect polarity of energies, a manifestation of light and dark forces united together for a common goal. It is regarded as a symbol of great fortune.

One of Tourmaline's most distinguishing properties is its ability to become electrically charged simply by heating or rubbing it. When charged, one end becomes positive and the other negative, allowing it to attract, or repel, particles of dust or bits of paper. This property of pyroelectricity (from heat) or piezoelectricity (from pressure or rubbing) was well-known to the Dutch traders of the 1700s who used Tourmaline to pull ash from their Meerschaum pipes, calling the stone *Aschentrekker*, or "ash puller." Black Tourmaline is an excellent grounding crystal for meditation and healing. It is said to be soothing for panic attacks, especially those caused by dark or confined spaces. It also helps control fears of doctors or dentists. In the workplace, Black Tourmaline is helpful for boosting concentration. Holding the stone for a few moments can refresh the mind when it is feeling overtaxed. It provides an excellent shield against environmental pollutants, electromagnetic smog, and radiation associated with cell phones, computers, and other electronic equipment. Black Tourmaline is a stone of purification, cleansing the emotional body of negative thoughts, anxieties, anger or feelings of unworthiness. It helps in overcoming substance abuse, and releases any suicidal thoughts or self-harming tendencies. It may be beneficial in treating obsessive or compulsive behaviors, and in relinquishing chronic worry. (It is important to note that crystal therapies are not intended as a substitute for other forms of health care, but may be used to complement or enhance treatment).

Black Tourmaline increases physical vitality, replacing tension and stress with the ability to view the world objectively with clear, rational thought and neutrality. It inspires a positive attitude, no matter the circumstances, and stimulates a practical creativity. Black Tourmaline is devoted to grounding spiritual energies. It furthers the ability to remain radiant in the darkest of circumstances, and to maintain a spiritual consciousness, and helps one to understand the love of the universe.

References: 1. Cunningham, Scott. *Cunningham's Encyclopedia of Crystal, Gem, and Metal Magic*. Llewellyn Publications. St. Paul, 2001. 2. [crystalvaults.com/crystal-encyclopedia/black-tourmaline](http://crystalvaults.com/crystal-encyclopedia/black-tourmaline) via *Healthy Beginnings Magazine*, October 2014 [www.HBmag.com](http://www.HBmag.com).

**Drop of Water Test for Topaz**

Quartz and topaz are not easy to separate by eye, and sometimes it is impossible when the quartz is a true topaz color. There is a big difference in price between the two, and anyone describing quartz as "topaz," however innocently, may well be in trouble. Topaz is quite a different mineral and is harder than quartz. Because of this, a drop of water will not spread on topaz but will spread on quartz. Clean the stone as effectively as possible with a cloth or handkerchief to remove all traces of grease. It must be dry before the test. Then place a spot of clean water on it with a thin glass or metal rod. On stones with a hardness of less than 7 on the Mohs scale, the water is dispersed. On harder stones it will remain a globule. The harder the stone, the more rounded will be the globule. via *Gritty Greetings*

Source: MOROKS, Jan 2015



## Birthstone for September is Sapphire

*Sapphire*, the September birthstone, has been popular since the Middle Ages and, according to folklore, will protect your loved ones from envy and harm. Medieval clergy wore sapphires to symbolize heaven, while commoners thought the gem attracted heavenly blessings. Blue sapphires range from very light to very dark greenish or violetish blue, as well as various shades of pure blue. The most prized colors are a medium to medium dark blue or slightly violetish blue. Sapphire is a variety of the gem species corundum and occurs in all colors of the rainbow. Pink, purple, green, orange, or yellow corundum are known by their color (pink sapphire, green sapphire). Ruby is the red variety of corundum.



## ANKLE SPRAINS

BARBARA BRILLHART RN PHD FNP-BC, SMOKE SIGNALS, DEC 2013

**A**nkle sprains can occur while participating in field trips out in the Arizona deserts especially with our rocky desert areas. Such injuries occur by stepping in a hole, falling, or jumping on an outstretched ankle. This article will focus on the types of ankle sprains, symptoms of ankle sprains, treatment for ankle sprains, and prevention of ankle sprains.

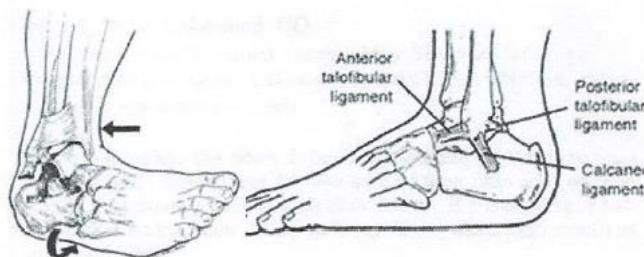
Ankle sprains are classified as first, second, or third degree sprains. The first degree sprain is due to a stretching or minor tearing of the ligaments. The symptoms of the first degree sprain include: minimal pain, mild swelling, mild bruising, and mild point (isolated) tenderness. The person still has a stable joint, full range of motion of the joint without pain, and be able to bear weight. This level of injury is treated with **RICE** which stands for **rest**, **ice**, **compression** (using an ace bandage), and **elevation**. The person should be able to return to full activity within 2 to 3 weeks using an ankle support.

The next level of ankle sprain is second degree and is due to major but not complete tearing of the ligament. It is characterized by mild to moderate pain, moderate swelling, moderate amount of bruising, slightly limited-painful joint motion, isolated tenderness. The second degree sprain also has mild joint instability plus pain plus the inability to bear weight. This level of injury is treated with RICE, partial weight bearing, an air cast or joint taping, and a gradual return to full activity.

The most serious or third degree sprain is due to a complete tear of the ligament. Symptoms of the third degree sprain include: severe pain, rapid (within 30 minutes) swelling, a larger amount of joint swelling, severe bruising (usually within 30 minutes), severe isolated tenderness, limited or loss of motion of the joint, very unstable joint, and the inability to bear weight. Many experience a "pop" sensation with this sprain. Immediately, the person should apply the treatment of RICE in the field then refer to care by an orthopedic specialist. The treatment of this serious injury often requires surgery, casting, no weight bearing, and rehabilitation. X-rays are often taken to rule out a fracture.

Prevention of ankle sprains is as follows:

- Wear laced- hiking boots that extend above the ankle and are in good condition. Avoid worn tennis shoes or sandals.
- Be aware of the terrain for conditions as loose stones or gravel, holes, wet rocks, and mossy ground.





## Officers & Club Information

### 2015 Board of Directors

#### Officers

President	Dan Siler	801-737-3013
Vice President	Nancy Anderson	801-425-7470
Secretary	Dave Offret	801-791-6081
Treasurer	David Law	801-644-4931

#### Activity Committee and Chairpersons

Field Trip Leader	Dave Offret	801-791-6081
Program	Tom & Debbie Larsen	

385-319-2808

Door Prize	Jim Alexander	801-399-0785
Hospitality	Linda Pilcher	801-392-7620

#### Communications

Membership	David Law	801-644-4931
------------	-----------	--------------

Mini-show	Alice Crittenden	801-547-7781
-----------	------------------	--------------

Safety	Dennis Anderson	801-425-7470
--------	-----------------	--------------

Publicity	Mark Acker	801-475-4705
-----------	------------	--------------

Buzzer Editor	Dave Harris	385-205-0304
---------------	-------------	--------------

Associate	Linda Pilcher	801-392-7620
-----------	---------------	--------------

Associate	Leora Alexander	801-399-0785
-----------	-----------------	--------------

Calling Committee	Sherm & Ricky Thompson	435-760-1362
-------------------	------------------------	--------------

### Federation Representatives

Rocky Mountain Federation Delegate	Dan Siler
------------------------------------	-----------

Utah Federation Delegate	Open
--------------------------	------

Public Land Advisory Committee	Jim Alexander
--------------------------------	---------------

### Club Affiliations

The Beehive Rock & Gem Club began in April of 1970 and is a member of the following:

Utah Federation of Mineralogical Societies

Rocky Mountain Federation of Mineralogical Societies

American Federation of Mineralogical Societies

Scribe

### Advertising Rates:

For sale ads are permitted for members at no charge. Business advertisements will be charged at the rate of \$5.00 for ¼ page or 15 cents per word for less than ¼ page.

### Objectives of the Club

The purpose of our club is to stimulate interest in the collection of rocks, minerals, gem materials, and legal fossils. To discuss and impart our knowledge of the different phases of collecting, cutting,

polishing and displaying them. Also to organize educational meetings, field trips and similar events while enjoying and protecting our natural resources.

### Membership Dues

Annual membership dues for adult members are:

\$11	Adult Single
\$16	Couple or Family
\$5	Junior Single (Under 18 and not part of a family membership)

Dues are due October 1 of each year.

### Meetings

General club meetings are held at 7 pm on the fourth Tuesday of each month at the Golden Hours Senior Center located at 650 E 25<sup>th</sup> St, Ogden, Utah.

All visitors are welcome!

Board Meetings are held at 7 pm on the first Thursday of each month at the Golden Hours Senior Center located at 650 E 25<sup>th</sup> St, Ogden, Utah.

### Newsletter

The Beehive Buzzer is the official newsletter of Ogden Beehive Rock and Gem Club and is published eleven times per year. Please send submissions and exchange bulletins to [beehivebuzzer@gmail.com](mailto:beehivebuzzer@gmail.com).

Any material in this bulletin may be copied, unless marked as copyrighted, as long as credit is given.

