



September 2021 Volume 49 Issue 9  
The Official Newsletter of the Beehive Rock and Gem Club  
PO Box 1011 Ogden, UT 84402

## BEEHIVE BUZZER



A Note From the President  
Debbie Larsen Page 2



Answers to last Months Crossword  
How did you do? Page 8

### SPECIAL ISSUE

Taking time to remember why our nation came together on  
**September 11<sup>th</sup> 2001.** See page 3



Update: September Field Trip Upgrade! See page 4

## September 28<sup>th</sup> Meeting Big Auction

**Get ready for our Big Auction!** This is where the club members donate all kinds of things pertaining to rockhounding, our field trips, camping, etc. Then we auction them off (Not a Silent Auction) to raise money for the club.

**Ideas of what to donate:** Rocks and fossils of all sorts, tools, buckets, saws, lapidary equipment, tumblers, coolers, hats, walking sticks, fold out stools and chairs, umbrellas, easy ups for shade, crafts made out of rocks, jewelry, etc. So, start looking through your stuff and bring it to the monthly club meeting, or give it to one of the board members! See more details on page 8



## Note From the President

Hi Everyone,

Summer is almost over and cooler weather is ahead. Yahoo! That makes our trips so much more pleasant to go on. We have had such a great turn out to our field trips and monthly meetings. It's been so nice getting to know all of you! This month we have a lot of fun events planned. The field trip to the Eureka area where we will find a lot of unique rocks and then our BIG Auction at the monthly club meeting. At the auction I always am able to get very special rocks and fun items. You will all have a blast! Excited to see what will be there. Make sure you come early to preview what you would like to bid on! It starts at 6pm.

See you soon,  
Debbie

## Golden Hours Senior Center Lapidary

The lapidary has opened as of August 3<sup>rd</sup>. It will only be open on Tuesdays from 4pm to 7:30pm at this time.

Contact Keith Butler (801-773-7104) if you plan to be there or if you have any questions.







## Field Trip Calendar Want to help plan field trips?

Contact Dave Offert 801-791-6081



**OK!! It's official! Our September Field Trip will still be on Saturday, the 25th, to the Wild West Towns of Eureka and Vernon Utah!!**

**WE are going after the Legendary Eureka Marble, Eureka Alberta Agate ( Similar to Indian Feather Jasper) and the World Famous Vernon Wonderstone! ( See photo's below.)**

**We will meet as a group at the KAYSVILLE Park and Ride at 7:00 AM, and caravan down together. Because the Covid situation is still very real, we won't be car pooling, just caravanning. ( is that a word?? )**

**Eureka Marble is a softer stone, and people have been able to make bowls and Pens out of it..**

**Wonderstone is just fun - tumbles quickly, and looks great. I DO need a head count on this one, so that we don't leave anyone behind, like I have been known to do.. Right Dan?? haha..**

**If you plan on going, TEXT me with your name, and the # of people with your group, at 801-791-6081 Dave Offret.**

**Should be a FUN day!!**

**Wonder  
Stone**



**Alberta Agate**



**October 21 -23. Multi-Day Camping Trip. FLOY WASH. So far, there are over 15+ different places we'll visit! bring BIG BUCKETS!!**

**As each date gets closer, we will send out details of when and where to meet. Remember, new people are always welcome, we only ask that after 2 trips, you join the club.**

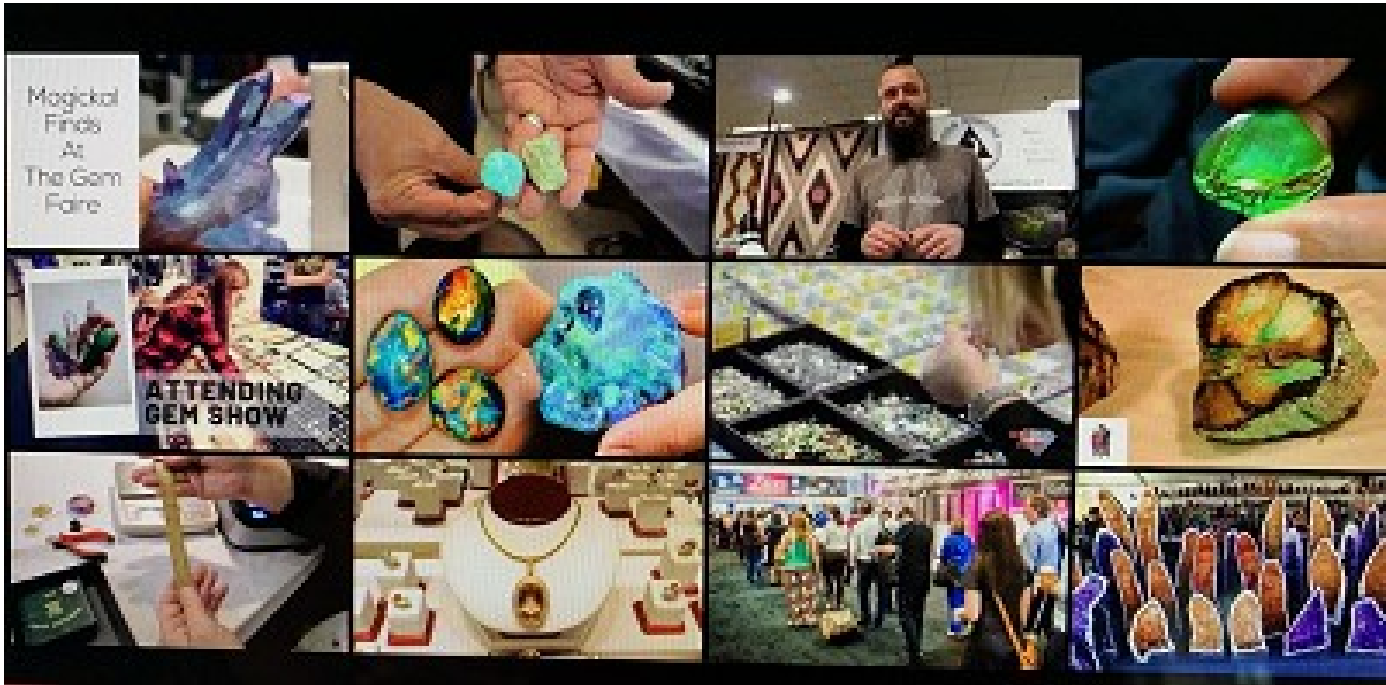
**Looking forward to the rest of the 2021 Field trip year!!**

# Reminders

## Gem Faire 2021 -September 24th-26th

GEM FAIRE: Sep. 24-26, 2021, Mountain America Expo Center, 9575 S. State St., Sandy. Fri. 10am-6pm, Sat. 10am-6pm, Sun. 10am-5pm.

Admission \$7 weekend pass. Free parking! Fine jewelry, precious & semi-precious gemstones, millions of beads, crystals, gold & silver, minerals & much more at manufacturer's prices. Jewelry repair & cleaning while you shop. For more info, visit [www.gemfaire.com](http://www.gemfaire.com) or call (503) 252-8300 or email: [info@gemfaire.com](mailto:info@gemfaire.com)



## Reminder: October is Dues Month!

Please be ready to pay your dues for 2022 at our monthly meeting! The dues have gone up this year.

Couple/Family - \$20

Single - \$15

Junior - \$5 (Junior members less than 16 years of age must be supervised by an adult relative or designated Club Member)





# FUN AND GAMES

## Rock Search

CHQAMAZONITERZUEHSTTVHUYKRBBXWR  
 BGUURMPBYAKDJDXTGGGDMHATITTEFWF  
 ICAKYGQWSNPFIAMXPGTJPRCMTDPQVLSFU  
 SHRYBVPVDJROAERCAHGNTEHFDENKOPBEIUUSLO  
 NATWLCUIIOAERCAHGNTEHFDENKOPBEIUUSLO  
 ULZHEQTNPOSRBPMNEKEKDMWPBFIUUSLO  
 LCEGDIKDCBBPMNEKEKDMWPBFIUUSLO  
 DEPAHEWIASLAEOGTMSDBYAAAYMRVAIT  
 JDMAFUQGHIAPTRIEAAIVILKQQAHOXOFH  
 BOQCXWVOMDCAHAAANCATUQYQROTOLD  
 LNCTVLLGXIKCYNOJRARKEYSLBDIWUS  
 UYNRZAAQAACHSAUZGALSXRXCNLIGMOP  
 ENOFCNARBBCAATJFMRMGVDIWDROIRUIB  
 AJMCMNARXMLERMALVESRZTEVZTSCTV  
 PPOCMNARXMLERMALVESRZTEVZTSCTV  
 AEXBSIDOBACATQORSELEQAEEGFEELEK  
 TTSFZTODDZZERXDCVITAVTGANHYADU  
 IRRNHERIRODSALUNAKTAVXBNPILKGLH  
 TIJPBXISVNOHLEERQERPDQORRKKUGGH  
 EFDJXITZGINPQAZNUBEEMJRILHHECF  
 CICLKMENETWYTVSEGNNSWIIOQCKSFGBV  
 DEJNWTZLEYFZTRLNPMRRJZOOMDCXP  
 DDFHCJAAJPCZSWUIPPQNZSVTMVWJKA  
 VWFASGLMLDEYNEUALXYYGGTVAECEJCG  
 IOBSLIMTZCTEEUANPZIUUNBFGONRNR  
 DOGBLUECALCITEYAEEBRHPACRZRFT  
 PDCKHUSNOWFLAKEOBSIDIANTWAFBWE  
 KZJZDPYRFMGKEYOUSMKARWRESJOONA  
 TEVBIOQOBGPPEUTBWSZUHDFAVOLJEGFJ  
 IXPOPKWVXSOSOSUEJYITPQCFCZNQIQ

Snowflake obsidian	Black Chalcedony	Petrified wood	Orange calcite
Apricot Agate	Indigo gabbro	Blue Apatite	Apache Tears
Blue calcite	Labradorite	Apache Tears	Aquamarine
Chalcedony	Amazonite	Rhodizite	Amazonite
Tiger's Eye	Carnelian	Magnesite	Angelite
Obsidian	Amethyst	Apatite	Marble
Hematite	Jasper	Fluorite	Agate
Opal	Quartz		

Click below to get to our Facebook page or web site

Official Beehive Rock and Gem Club

[www.BeehiveRockandGemClub.com](http://www.BeehiveRockandGemClub.com)



# What Rocks Can Be Tumbled Together?

Rocks with the same Mohs hardness usually can be tumbled together. The most common tumbled rocks can be split into 12 large groups, according to their Mohs hardness. Discussed are 6 groups. The first group belongs to the beautiful chrysocolla, also known as eilatite. This stone has a hardness between 2 and 7, and it should be carefully checked before mixing it with other rocks in the tumbler.

Information found on <https://howtofindrocks.com/>

**Specimen**  
**Mohs Hardness**  
Blue calcite 3  
Orange calcite 3  
Marble 3

**Specimen**  
**Mohs Hardness**  
Magnesite 3.5  
Indigo gabbro 4 – 5  
Fluorite 4  
Apatite, Blue Apatite 5

**Specimen**  
**Mohs Hardness**  
Obsidian 5 – 5.5  
Snowflake obsidian 5 – 5.5  
Apache tears 5 – 5.5

**Specimen**  
**Mohs Hardness**  
Tiger's Eye 5.5 – 6  
Red Tiger's Eye 5.5 – 6  
Gold Tiger's Eye 5.5 – 6

**Specimen**  
**Mohs Hardness**  
Green Opal 5.5 – 6  
Hematite 5.5 – 6  
Rhodonite 5.5 – 6.5  
Amazonite 6  
Labradorite 6 – 6.5

**Specimen**  
**Mohs Hardness**  
Petrified wood 6.5 – 7  
Jasper 6.5 – 7  
Agate 7  
Carnelian 7  
Quartz 7  
Chalcedony 7

In the second group, we have included the calcites such as blue calcite and orange calcite. Their Mohs hardness is about three and can be safely tumbled together but will require checking from time to time. Marble also has a Mohs hardness of 3.

The third group is dedicated to the rocks with Mohs hardness between 3.5 and 5.

All the above specimens can be safely tumbled together. They are considered soft rocks, take only a few days to bring them to the polishing stage.

The fourth group belongs to the obsidian. We included this rock in a separate category as it is one of the specimens that should be tumbled separately. Obsidian is a fragile rock that splits into sharp chips that might cause bruises if tumbled with other species

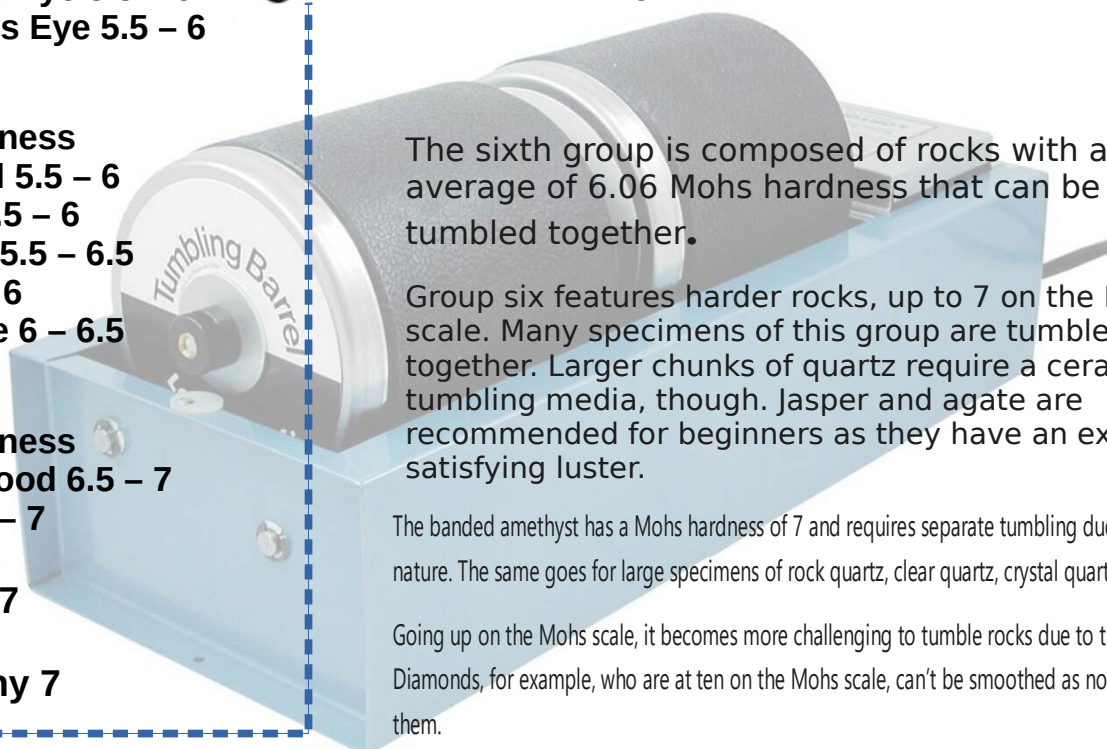
Another notable group is the tiger's eye family of rocks. The best results are obtained if these stones are tumbled together.

The sixth group is composed of rocks with an average of 6.06 Mohs hardness that can be safely tumbled together.

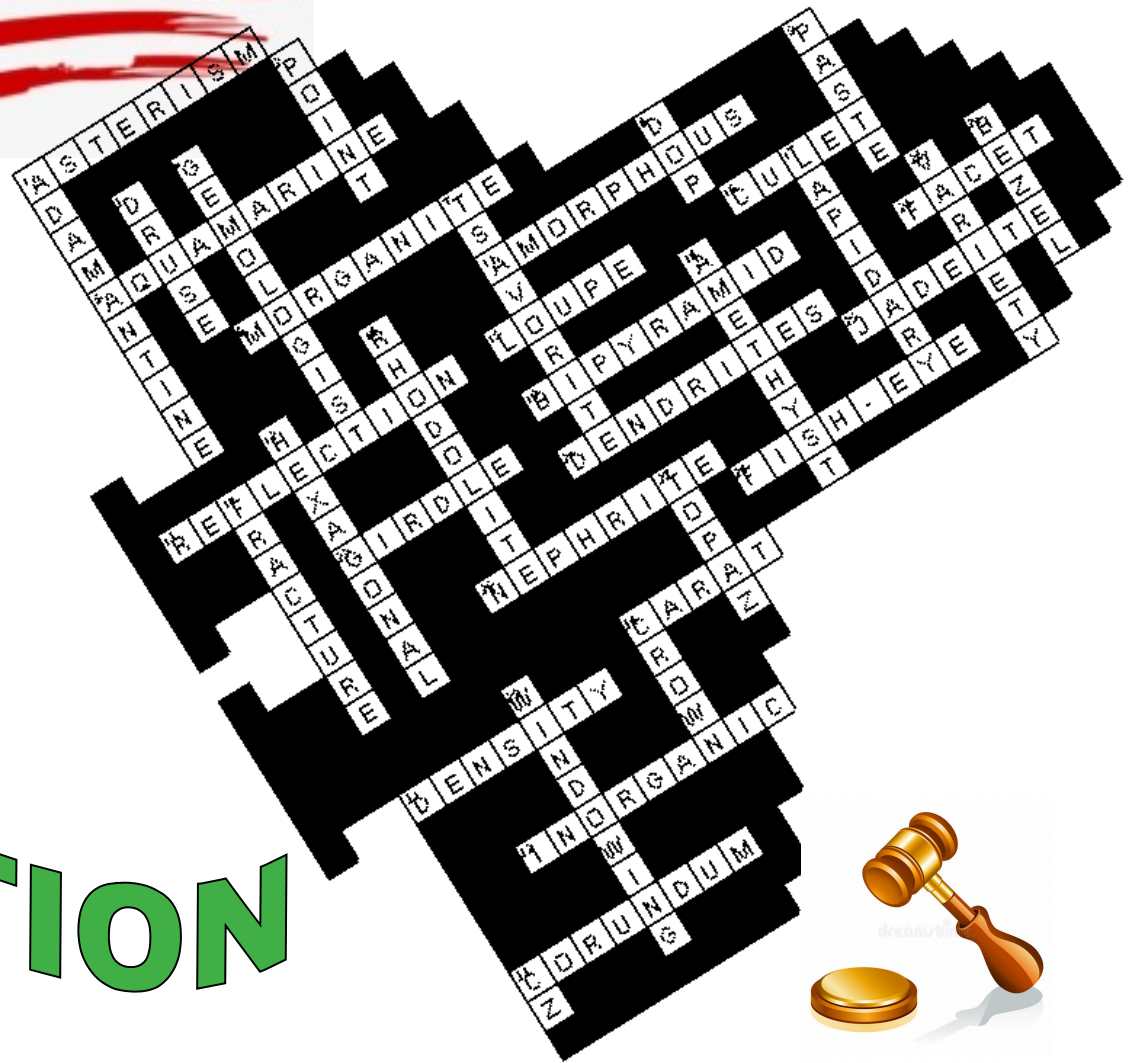
Group six features harder rocks, up to 7 on the Mohs scale. Many specimens of this group are tumbled together. Larger chunks of quartz require a ceramic tumbling media, though. Jasper and agate are recommended for beginners as they have an excellent satisfying luster.

The banded amethyst has a Mohs hardness of 7 and requires separate tumbling due to its fragile nature. The same goes for large specimens of rock quartz, clear quartz, crystal quartz, or rose quartz.

Going up on the Mohs scale, it becomes more challenging to tumble rocks due to their hardness. Diamonds, for example, who are at ten on the Mohs scale, can't be smoothed as no grit can grind them.







# AUCTION



**Where:** Golden Hours Senior Center 650 25<sup>th</sup> Street Ogden

**When:** September 28<sup>th</sup> Auction Starts at 6pm Sharp!

**What:** Items must be delivered between 5:15 and 5:45 so that they can be previewed before 6pm.

**Donate:** Club members, like you, can donate items to help raise funds for the Club Please have your items delivered at 5:15 or earlier. You can take them to a board member if that is easier. This may be a fast auction so look for what you have been wanting and be ready to bid.



# August Happenings



## Rock Tumbling Class



## Mexican Lace brought in from Chihuahua Mexico







**Elections** - are coming up in November at our monthly meeting. We will be voting on our officers: President, Vice President, Secretary and Treasurer. If you are interested in running for any of these positions please let one of the board members know. If you would like to suggest someone for one of these positions please talk to them first. They have to be in agreement to run before the night of elections. Thank you!

## **Club Officers**

**President - Debbie Larsen 385-319-2808**

**Vice President - Babette Nelson 801-395-4102**

**Secretary - Dave Offret 801-791-6081**

**Treasurer - Tom Larsen 801-390-8270**

## **Activity Committee and Chairpersons**

**Field Trip Leader - Dave Offret 801-791-6081**

**Program Chair - Babette Nelson 801-395-4102**

**Door Prizes - Linda Pilcher 801-668-8084**

**Hospitality - Linda Pilcher 801-668-8084**

**Communications - Steve Smith 801-781-0233**

**Membership - Dave Offret 801-791-6081**

**Safety**

**Publicity 801-867-5309**

**Buzzer Editor - Ron Yeoman Associate Editor - Debbie Larsen**

**Calling Coordinator - Linda Pilcher 801-668-8084**

**Club Photographers**

**Club Historian**

**Facebook Administrators - Ron Yeoman, Dave Offret and Debbie Larsen**

**Beehive Web Page Administrator - Steve Smith 801-781-0233**

**For questions or comments about the Beehive Buzzer email**

**BeehiveBuzzer2021@gmail.com Call 801-675-1901**





Brotherhood

*spacious skies*

heroes proved

mercy more than life

their country loved

*Oh beaeriful*

liberty in law!

*America*

God

FRUITED PLAIN

liberating strife

more than self,

amber waves of grain

crowned thy good

God mend flaw,

purple mountain majesties

self-control,